

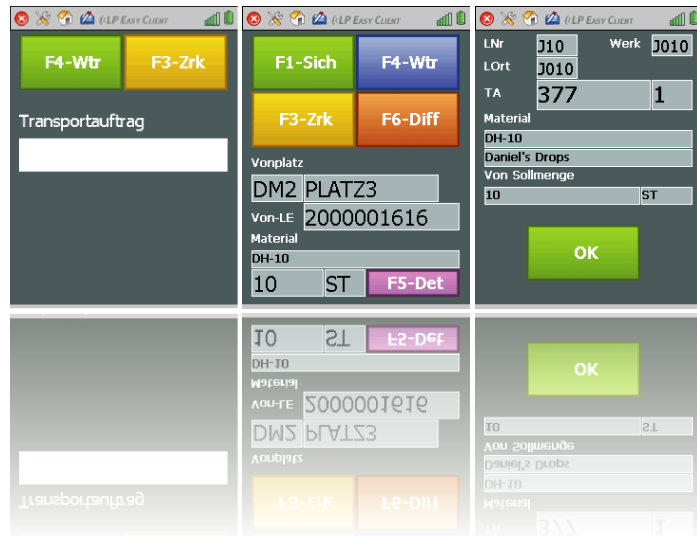


OPAL portrait

OPAL Associates Holding AG, headquartered in Wetzikon, Switzerland, with subsidiaries in Austria, Germany, France and Denmark was founded in 1996. OPAL is a leading Auto-ID system manufacturer and full-range supplier. We provide innovative logistics products, solutions and services for the commerce, retail, industrial, transport, logistics and other sectors. Our clients receive a comprehensive one-source barcode and RFID technology based solution, including consultation, conceptual design, project planning, installation and customized maintenance. Close cooperation with all of the important hardware manufacturers in the Auto-ID sector, as well as established cooperation with software partners, enables OPAL to provide optimal solutions for a wide range of requirements and to guarantee the highest quality support.



LP MobileGRAFIX® solution



Visualize your SAP® logistics processes, such as storage, stock transfer, or goods issuing, on portable terminals, with LP MobileGRAFIX® !

LP MobileGRAFIX®

- You employ SAP® software for logistics applications or plan to do so
- You want to support storage, stock transfer, picking or goods issuing with portable terminals for immediate SAP® goods posting
- You want to reduce stock entry error rates and increase the quality and quantity of your inventory services

OPAL offers a future-oriented graphic solution linking your portable terminals to your SAP® system. Your stock management employees receive a tool with which to post your goods in the SAP® system as easily and quickly as possible. Prompt and secure inventory management is our primary goal.

One of the most important factors in any successful application of a barcode/RFID supported system is user acceptance. We achieve high user acceptance by way of customized portable terminal coloured data entry screens that can be displayed in every SAP® language.

Let us show you a classic example of just such an application in more detail:

Task

- Logistics employees are to use a portable terminal to store a stock item in accordance with a transfer order

Using LP MobileGRAFIX®

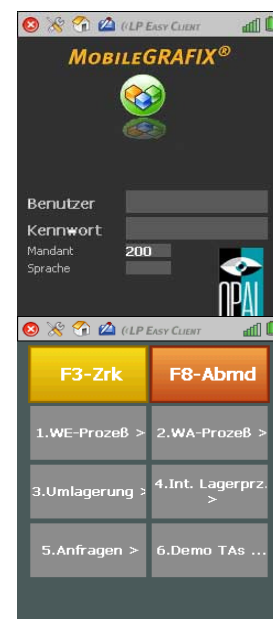
- Standard SAP® RF transactions included in the Warehouse Management (WM) module facilitate the storage process
- OPAL implements the LP MobileGRAFIX® solution together with the client
- A layout for the data entry screens is defined together with the client's logistics department
- The rollout time for this storage process is around two weeks

Application

1. The logistics employee logs their portable terminal into the SAP® system via wireless LAN.

The installed LP EasyClient (part of the LP MobileGRAFIX® solution) calls up the transaction LM00 (RF registration). The SAP® user is then asked for his/her user name and password.

2. The employee selects the desired operating process by touching the required function. The stock receipt process (SAP® transaction LM01) in our example.



- The employee stores the stock unit in accordance with the transfer order (SAP® transaction LM03) by simply touching "Storage", followed by "Storage TA".



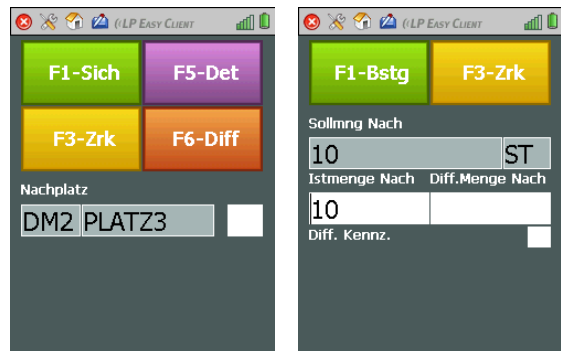
- After importing the transfer order, the employee is shown the stock unit intended for storage. Additional information on the transfer order can be requested via the "Detail" function.



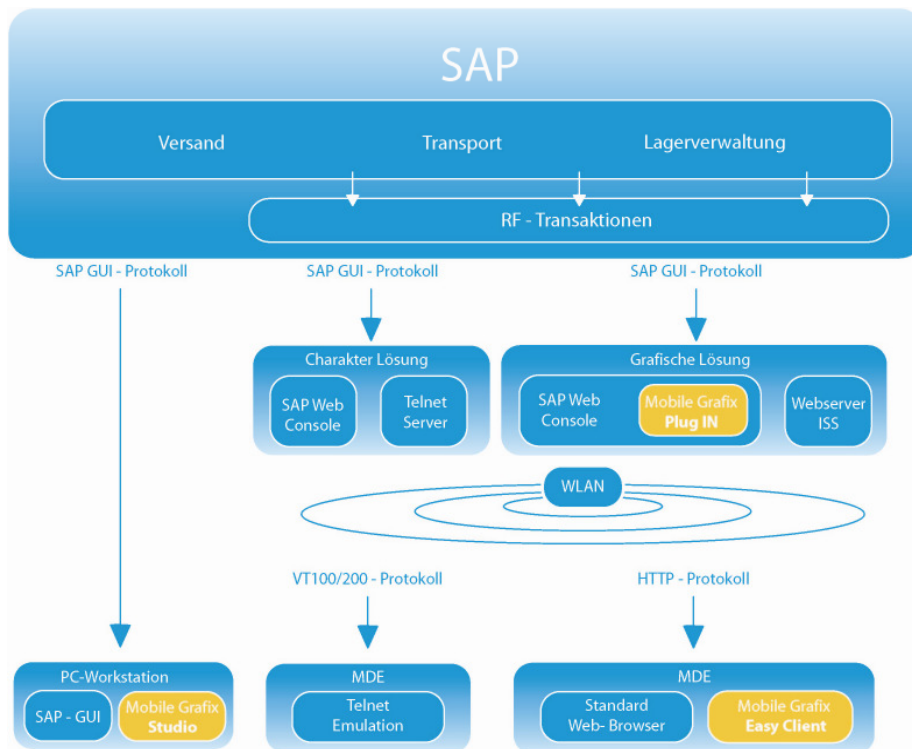
- Once the stock unit is confirmed, the employee is shown where to deposit it.

If unable to store the desired amount at the designated storage area, the employee can undertake a "Difference" booking.

Once deposited, the stock unit is posted by scanning the storage area barcode. The employee is now ready to process a further transfer order.



LP MobileGRAFIX® integration



The aim of the LP MobileGRAFIX® solution is to enhance user friendliness and acceptance by improving the visualization of SAP® transactions on portable terminals.

As they can only be operated using keyboard function keys, TELNET emulation based connections on the whole are not user friendly and fail to adequately fulfil modern demands.

Combining customized graphic layouts and the original 'digital' tool - the human finger – LP MobileGRAFIX® greatly improves visibility and usability.

LP MobileGRAFIX® solution functions independently of the applied SAP® module and also improves transactions not programmed with SAP® Standard.

The solution supports SAP® WebConsole (as illustrated above) and SAP® ITS technology.

LP MobileGRAFIX® solution software packages:

For connection with SAP® WebConsole:

- LP MobileGRAFIX® plug-in
- LP EasyClient®
- LP MobileGRAFIX® Studio SAP® WebConsole edition

For connection with ITS:

- LP EasyClient®
- LP MobileGRAFIX® Studio ITS edition



Schweiz - OPAL Associates AG - Motorenstrasse 116 - CH-8620 Wetzikon - Tel.: +41(0)44 931 12 22 - Fax: +41(0)44 931 12 20 - Email: info@opal-holding.com - www.opal.ch
 Deutschland - OPAL Associates GmbH - Am Vögelsberg 5 - D-78479 Reichenau - Tel.: +49(0)7534 999 56 0 - Fax: +49(0)7534 999 56 99 - Email: info@opalgmbh.de - www.opalgmbh.de
 Österreich - OPAL Associates GesmbH - Donaufelderstrasse 101/2/8 - A-1210 Wien - Tel.: +43(0)1 270 03 13 - Fax: +43(0)1 270 03 15 - Email: info@opalgmbh.at - www.opalgmbh.at
 Frankreich - OPAL Associates SA - Avenue des Boveresses 54 - CH-1000 Lausanne - Tel.: +41(0)21 653 95 00 - Fax: +41 (0) 21 653 95 02 - Email: info@opal-holding.com - www.opalsa.ch
 Dänemark - OPAL Associates ApS - Plutovej 7 - DK-8722 Hedensted - Tel.: +45 7674 1510 - Fax: +45 7589 2733 - Email: info@opalaps.dk - www.opalaps.dk
 Weitere Standorte: München, Hamburg, Frankfurt, Darmstadt, Bregenz, Lyon - www.opal-holding.com

LP MobileGRAFIX® plug-in



Enjoy enhanced usability and visibility with LP MobileGRAFIX®, and intuitive SAP® transaction representation with LP MobileGRAFIX® for SAP®WebConsole.

Reasons

The LP MobileGRAFIX® plug-in comes to your aid should the graphic options in the SAP®Console transaction development environment fall short.

This plug-in (often erroneously termed middleware) lets you highlight single fields, pushbuttons etc., in a virtually unlimited and flexible manner. It lets you easily alter colour, size or position and hide standard transaction fields. All setting can also be shown in various languages (depending on your SAP® language setting).

Ergonomic and intuitive process visualization on small screens demands screen optimization that fosters user acceptance and operational efficiency.

Highlighting important information minimizes reading errors, thereby enhancing usability and security.

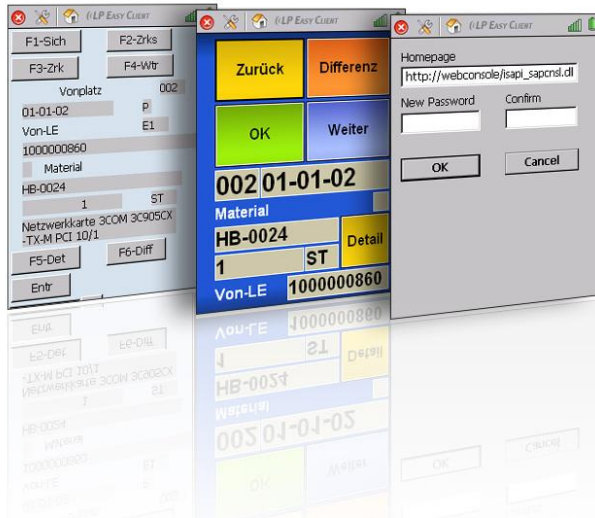
Advantages of LP MobileGRAFIX®

- Full user acceptance by way of intuitive and simple operation
- Reduced training und support costs
- Fast implementation
- Fully compatible with - and integrated in - the SAP®WebConsole delivered by SAP®
- Runs on all portable Microsoft® operating systems
- Requires neither middleware nor new programming tools
- Requires neither additional data management nor hardware



Schweiz - OPAL Associates AG - Motorenstrasse 116 - CH-8620 Wetzikon - Tel.: +41(0)44 931 12 22 - Fax: +41(0)44 931 12 20 - Email: info@opal-holding.com - www.opal.ch
Deutschland - OPAL Associates GmbH - Am Vögelsberg 5 - D-78479 Reichenau - Tel.: +49(0)7534 999 56 0 - Fax: +49(0)7534 999 56 99 - Email: info@opalgmbh.de - www.opalgmbh.de
Österreich - OPAL Associates GesmbH - Donaufelderstrasse 101/2/8 - A-1210 Wien - Tel.: +43(0)1 270 03 13 - Fax: +43(0)1 270 03 15 - Email: info@opalgmbh.at - www.opalgmbh.at
Frankreich - OPAL Associates SA - Avenue des Boveresses 54 - CH-1000 Lausanne - Tel.: +41(0)21 653 95 00 - Fax: +41 (0) 21 653 95 02 - Email: info@opal-holding.com - www.opalsa.ch
Dänemark - OPAL Associates ApS - Plutovej 7 - DK-8722 Hedensted - Tel.: +45 7674 1510 - Fax: +45 7589 2733 - Email: info@opalaps.dk - www.opalaps.dk
Weitere Standorte: München, Hamburg, Frankfurt, Darmstadt, Bregenz, Lyon - www.opal-holding.com

LP EasyClient®



Reasons for the application

We are witnessing the increasing application of portable data acquisition units running Windows® CE in modern inventory management. As a reaction to this, the SAP® WebConsole and ITS web browser application enable direct display and application of RF transactions in SAP®.

Portable solutions for industrial applications must include a variety of properties and functions. Robust units with specialized hardware such as barcode scanners are currently in high demand. As client software, the web browser must be stable, user-friendly and fault-tolerant. For example: any departure from the intended program sequence should not be possible and radio communication outages should not negatively affect operation.

LP EasyClient is an innovative portable data acquisition web browser. Fully compatible with SAP® WebConsole, it includes all functions required for smooth and efficient RF transaction workflow.

LP EasyClient runs on all portable data acquisition units running Windows® CE and (with certain limitations) Windows® Mobile. This makes it suitable to a wide spectrum of units available on the market. Whether you shift to new units or use a mix of different types of units, the interface look and feel remains the same.

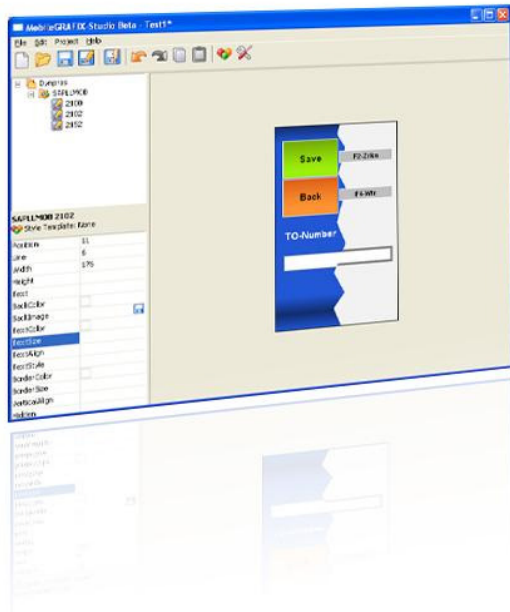
Features overview

- Full screen mode
- Wireless outage backup
- Radio communication and battery status display
- Supports function keys
- Configurable time-out
- NUMSIP (numerical SIP control)
- Server switching
- Full WebSAPConsole support
- Browser config. and exit password query
- Simple installation, configuration and operation
- Runs on all portable PDAs with Windows® operating systems



Schweiz - OPAL Associates AG - Motorenstrasse 116 - CH-8620 Wetzikon - Tel.: +41(0)44 931 12 22 - Fax: +41(0)44 931 12 20 - Email: info@opal-holding.com - www.opal.ch
Deutschland - OPAL Associates GmbH - Am Vögelsberg 5 - D-78479 Reichenau - Tel.: +49(0)7534 999 56 0 - Fax: +49(0)7534 999 56 99 - Email: info@opalgmbh.de - www.opalgmbh.de
Österreich - OPAL Associates GesmbH - Donaufelderstrasse 101/2/8 - A-1210 Wien - Tel.: +43(0)1 270 03 13 - Fax: +43(0)1 270 03 15 - Email: info@opalgmbh.at - www.opalgmbh.at
Frankreich - OPAL Associates SA - Avenue des Boveresses 54 - CH-1000 Lausanne - Tel.: +41(0)21 653 95 00 - Fax: +41 (0) 21 653 95 02 - Email: info@opal-holding.com - www.opalsa.ch
Dänemark - OPAL Associates ApS - Plutovej 7 - DK-8722 Hedensted - Tel.: +45 7674 1510 - Fax: +45 7589 2733 - Email: info@opalaps.dk - www.opalaps.dk
Weitere Standorte: München, Hamburg, Frankfurt, Darmstadt, Bregenz, Lyon - www.opal-holding.com

LP MobileGRAFIX® Studio



LP MobileGRAFIX® Studio is an extension of the LP MobileGRAFIX® plug-in. The graphic editor enables SAP® WebConsole screen redesign. LP MobileGRAFIX® Studio is also available as an ITS edition! As this studio writes directly into the ITS it does require LP MobileGRAFIX® plug-ins.

Reasons for the application

Aimed at improving usability, the graphic design studio LP MobileGRAFIX® Studio opens up new possibilities for altering existing SAP® dynamic programs with tried-and-tested LP MobileGRAFIX® functions. The possibilities range from size, style or position adjustment, through to replacing individual screen elements with graphics/icons. Size adjustments or element repositioning is possible down to the level of pixels. This is made possible by applying a WYSIWYG (what you see is what you get) graphic editor. Here imagination is the limit. This independence results in significant savings on consulting and development.

Features overview

- Creation and saving of projects
- Creation of style templates
- Direct importing of Dynpro layouts from the SAP® system
- Exporting of LP MobileGRAFIX® plug-ins
- Style mapping for dynamic definitions
- Simplified style template based operation
- Large number of alterable attributes for every screen or dynamic program element
- Prefabricated theme library including design templates optimised for usability
- Use of true WYSIWYG
- Intuitive user interface



Schweiz - OPAL Associates AG - Motorenstrasse 116 - CH-8620 Wetzikon - Tel.: +41(0)44 931 12 22 - Fax: +41(0)44 931 12 20 - Email: info@opal-holding.com - www.opal.ch
Deutschland - OPAL Associates GmbH - Am Vögelsberg 5 - D-78479 Reichenau - Tel.: +49(0)7534 999 56 0 - Fax: +49(0)7534 999 56 99 - Email: info@opalgmbh.de - www.opalgmbh.de
Österreich - OPAL Associates GesmbH - Donaufelderstrasse 101/2/8 - A-1210 Wien - Tel.: +43(0)1 270 03 13 - Fax: +43(0)1 270 03 15 - Email: info@opalgmbh.at - www.opalgmbh.at
Frankreich - OPAL Associates SA - Avenue des Boveresses 54 - CH-1000 Lausanne - Tel.: +41(0)21 653 95 00 - Fax: +41 (0) 21 653 95 02 - Email: info@opal-holding.com - www.opalsa.ch
Dänemark - OPAL Associates ApS - Plutovej 7 - DK-8722 Hedensted - Tel.: +45 7674 1510 - Fax: +45 7589 2733 - Email: info@opalaps.dk - www.opalaps.dk
Weitere Standorte: München, Hamburg, Frankfurt, Darmstadt, Bregenz, Lyon - www.opal-holding.com

System requirements

- LP MobileGRAFIX® plug-in for SAP® WebConsole edition:
 - Operating system: Windows® XP, 2000 SP4
 - Processor: Pentium I, 133 MHz (rec. 256 MHz)
 - Hard drive: NTFS partition necessary
 - RAM: 128 MB RAM (256 MB RAM)
- LP EasyClient for data acquisition units:
 - Microsoft® Windows® CE 4.2 or Windows® CE 5.0 with IE 5.0
 - Microsoft® Windows® Mobile 5.0 with Pocket IE
 - Microsoft® Windows® XP Embedded
- LP MobileGRAFIX® Studio for SAP® WebConsole / and ITS edition:
 - Operating system: Windows® XP, 2000 SP4
 - Processor: Pentium I, 133 MHz (recommended 256 MHz)
 - Hard drive: NTFS partition necessary
 - RAM: 128 MB RAM (256 MB RAM)

Sample invoice

(LP MobileGRAFIX® for SAP® WebConsole, with 12 users)

LP MobileGRAFIX® plug-in

- Standard licence: for 12 portable terminals using LP MobileGRAFIX® templates

LP EasyClient

Licence for 12 portable terminals

LP MobileGRAFIX® implementation

- Logging of the transactions used
- Acquisition template design workshop (stock receipt process)
- Creation of acquisition templates
- On-site LP MobileGRAFIX® installation and configuration

- Incl. charge for Studio use

Roll out: approx. 2 weeks

€ 9678.00
=====



Schweiz - OPAL Associates AG - Motorenstrasse 116 - CH-8620 Wetzikon - Tel.: +41(0)44 931 12 22 - Fax: +41(0)44 931 12 20 - Email: info@opal-holding.com - www.opal.ch
Deutschland - OPAL Associates GmbH - Am Vögelsberg 5 - D-78479 Reichenau - Tel.: +49(0)7534 999 56 0 - Fax: +49(0)7534 999 56 99 - Email: info@opalgmbh.de - www.opalgmbh.de
Österreich - OPAL Associates GesmbH - Donaufelderstrasse 101/2/8 - A-1210 Wien - Tel.: +43(0)1 270 03 13 - Fax: +43(0)1 270 03 15 - Email: info@opalgmbh.at - www.opalgmbh.at
Frankreich - OPAL Associates SA - Avenue des Boveresses 54 - CH-1000 Lausanne - Tel.: +41(0)21 653 95 00 - Fax: +41 (0) 21 653 95 02 - Email: info@opal-holding.com - www.opalsa.ch
Dänemark - OPAL Associates ApS - Plutovej 7 - DK-8722 Hedensted - Tel.: +45 7674 1510 - Fax: +45 7589 2733 - Email: info@opalaps.dk - www.opalaps.dk
Weitere Standorte: München, Hamburg, Frankfurt, Darmstadt, Bregenz, Lyon - www.opal-holding.com